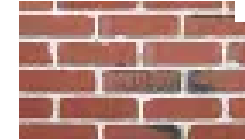
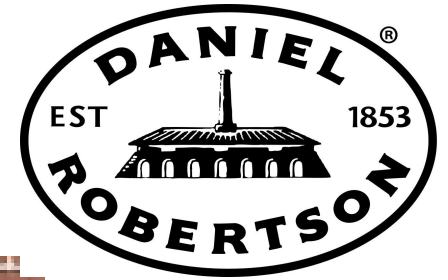


Range: Civic Series

Colour:

SKU: 7114000102T0000336100



## Technical Data

Width (mm)	110
Height (mm)	76
Depth (mm)	230
Dimensional Category	DW1
Core Volume (%)	33
Units per Square Metre	48.5
Pack Size	348
Characteristic Unconfined Compressive Strength (f 'uc) MPa	>10
Maximum Cold Water Absorption (%)	13
Initial Rate of Absorption (IRA) (kg/m2 min)	0.5-3.0

Coefficient of Expansion e'Factor (mm/m)	1.2
Liability to Efflorescence	Slight
Lime Pitting Liability	Nil
Solar Absorption	0.73
LRV	14.7
Place of Manufacture	Victoria
Product Warranty	100 Years
Solar Absorption	0.73
Meter squared	48.5

This Data represents average results from commercial production lots. If specific test results are required, sample should be taken from current production lots.

AUSTRALIAN STANDARD TEST METHODS AS/NSZ 4456 ARE USED AS APPLICABLE. January 2025

[www.brickworks.co.nz](http://www.brickworks.co.nz)

A BRAND OF

**BRICKWORKS**